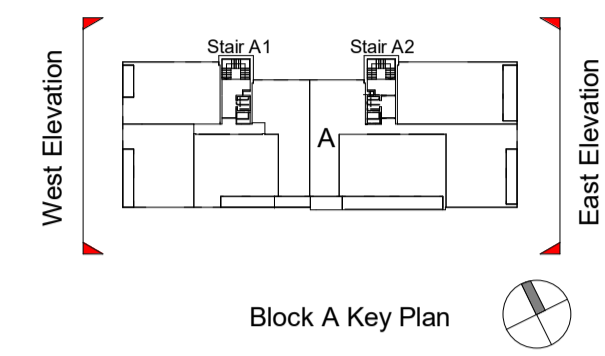
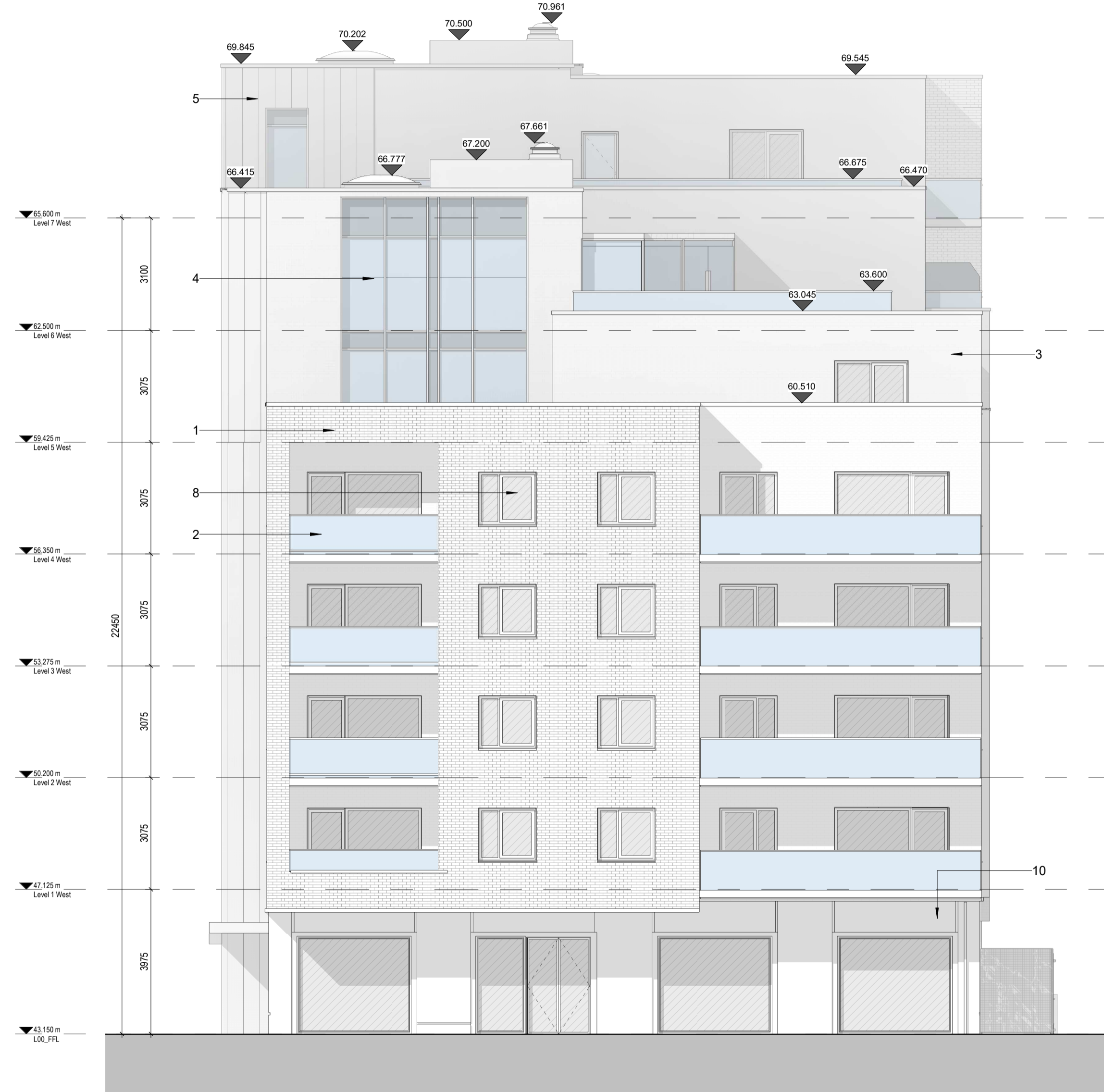


# DESIGN INTENT DRAWING



1 GA - East Elevation

1 : 100



2 GA - West Elevation

1 : 100

### Material Legend

- 1 Oatmeal Brickwork
- 2 Glazed balustrade with power-coated metal handrails
- 3 Grey Brickwork
- 4 Powder Coated Aluminium Double Glazed Curtain Wall
- 5 Zinc Standing Seam Cladding
- 6 Powder Coated Pressed Metal Coping Detail
- 7 Powder Coated Pressed Metal
- 8 Powder Coated Aluminium Double Glazed Windows
- 9 Render Finishing Off White
- 10 Selected Limestone
- 11 Obscure Back-Painted Glazing
- 12 Charcoal Brickwork

Rev	Description	Date	Dr by	App by
Project Stage				

## PLANNING

Client:  
Eastwise Construction Swords Limited

Project:  
Hartfield Place  
Swords Road, Whitehall, Dublin 9  
D09 C7F8

Drawing Title:  
BLOCK A - East and West Elevation GA - 472 Units

Drawn	Checked	Paper Size	Scale	Date
DP	CM	A1	1 : 100 @A1	Mar. 2022

Project No.	Drawing No.	Classification	Revision
HARTPL	012520		

File Name:  
HARTPL-CWO-BA-ZZ-DR-A-012520

Status:  
S2-Suitable For Information